

Building Pennsylvania's Multilingual Future:

Shaping the PA Language Roadmap

Cherie Garrett & Michael Bogdan
PSMLA Vice Presidents

September 19, 2025



Session Objectives

- ❑ Gain a deeper understanding of the **current landscape** and needs of world language education in Pennsylvania.
- ❑ Analyze the core elements and strategic priorities outlined in the **PA Language Roadmap**.
- ❑ Contribute ideas and strategies for **implementing** the roadmap in K-12 schools, higher education, industry, and community settings.
- ❑ Explore ways to **advocate** for multilingual education initiatives in our own professional and local contexts.

Session Overview

1. Introductions
2. Current State of World Language Education in PA
3. Overview of the PA Language Roadmap
4. Small Group Discussions: Operationalizing the Roadmap
5. Whole Group Synthesis & Next Steps

Introductions

- Mike Bogdan, PSMLA 1st Vice President
- Cherie Garrett, PSMLA 2nd Vice President



Pennsylvania State Modern
Language Association



Vision & Mission Statement



Pennsylvania State Modern
Language Association

*INSPIRING MULTILINGUAL
COMMUNICATION AND
INTERCULTURAL
UNDERSTANDING*

**The mission of the Pennsylvania
State Modern Language Association
(PSMLA) is to enhance world
language education throughout
Pennsylvania by:**



Promoting the teaching
and learning of world
languages and culture at
all levels (Pre-K through
university)

Providing
opportunities for
professional growth
and networking





Recognizing excellence
in the field

Collaborating
with local, state,
and national
organizations



© February 2022 | www.psm्ला.org

Current State of World Language Education in PA

Trivia #1

What is the high school world language graduation requirement in PA?

K-12 Requirements

- PDE mandates that every school district must offer at least two languages in addition to English. One must be a modern language and one offered in a 4-year sequence.
- There is no PA statewide graduation requirement for world languages unlike in neighboring states such as MD, NJ, VA, WV, and NY.

K-12 Requirements: Impact

- Local decision to have any requirement.
- Very few elementary language programs.
- Lack of proficiency testing.
- Certain populations lack access.
- Evidence that many districts are in violation of minimum offerings.

Summary: Many PA students take no language courses or attain minimal proficiency.

Trivia #2

In what year were the PA Standards in World Languages approved?

PDE Support

- There are no state-approved standards unlike in MD, NY, NJ, OH, and WV.
- The PDE Content Advisor for World Languages has been vacant since 2011.
 - The Bilingual Education Advisor and Fine Arts Consultant jointly share the role of supporting World Languages.

PDE Support: Impact

- Lack of:
 - leadership for proficiency-based WL programs
 - resources for classroom teachers reflecting best practices
 - enrichment programs for students and teachers
 - support for strengthening the language teacher pipeline
 - promotion of the PA Seal of Biliteracy and other language programs
- Difficulty in gathering WL program data to support programming

Summary: There is a lack of visibility to the needs of WL students and educators at the state level.

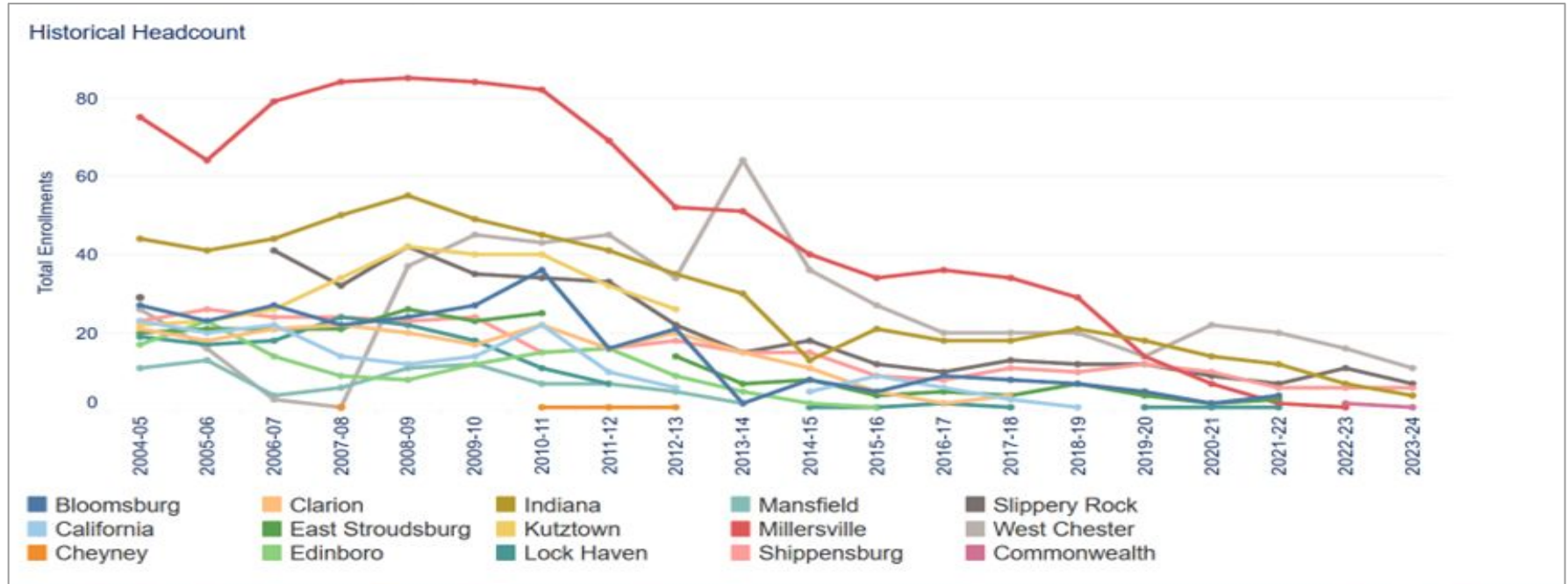
Trivia #3

How many Instructional I certificates in French were issued in PA in 2023-24?

Teacher Certification

	2010-2011	2013-2014	2022-2023	2023-2024
French	51	23	10	9
German	17	7	5	3
Latin	9	5	2	1
Spanish	159	99	46	42

PASSHE Enrollment in WL Education Majors



Teacher Certification: Impact

- Curtailment of programs
- Larger class sizes or combined levels
- Emergency-certified teachers
- University program closures
 - Millersville University: Cut French and German due to low enrollment and now only offer Spanish and Japanese (2018)
 - Kutztown University: Moratorium on modern languages majors (2024)
 - Elizabethtown College: Cut Spanish education and Spanish major, still offer some classes for Spanish minor (2025)
 - PASSHE Pilot program to share world language courses across all 14 campuses (2026)

Summary: Fewer enrollments in teacher preparation programs limits access to high-quality language instruction for students.



Please Share

**What concerns you
most about the
state of world
language education
in PA?**

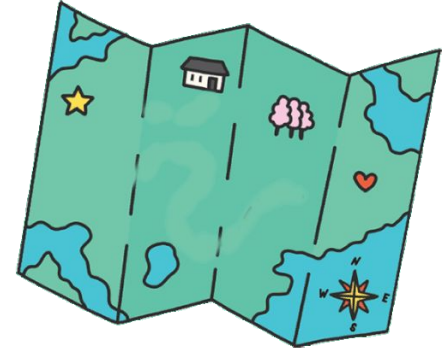
Overview of the PA Language Roadmap

PA Language Roadmap

What is a language roadmap?

Strategic planning document to strengthen world language education...

1. to meet the needs of communities in the state
2. to prepare students for a global society
3. to enhance PA's economic competitiveness



3 Goals

Goal #1: Develop leadership and advocacy for language education

- Create partnerships, state-level leadership and resource-sharing

Goal #2: Develop continuous and effective language programs for all students

- Increase opportunities (cultural and linguistic) and improve language proficiency

Goal #3: Develop and sustain teacher language talent

- Expand recruitment and world language professional development and improve mentoring and teacher retention

Goal #1 Develop leadership and advocacy for language education

1.1 Establish state-level leadership to support and sustain cross-sector collaboration for language education.

Action Steps

1. Facilitate communication between stakeholders and state politicians by creating a list of contact information.
2. Build a bipartisan caucus within the state legislature and a cross-industry coalition (e.g. educators, business leaders, healthcare providers, etc.) to support and grow language programs.
3. Advocate for the PA Seal of Biliteracy to be an industry-recognized credential and recognized for college credit across the state
4. Advocate for a designated World Language Advisor at PDE.

Where should we start?

Which one of the 4 action steps will have the most impact on language education in the state? How?



1.2 Increase awareness, understanding and support for language education, intercultural competence, and global learning.

Action Steps

1. Highlight and grow language programs with cross-curricular and real-world applications (e.g., immersion experiences, summer language camps, language-specific programs like medical Spanish, business German).
2. Integrate language education in career and technical education through PDE's Career Readiness Standards.
3. Compile and post information (data, videos, articles, PD etc.) to publicize language and/or global opportunities for both teachers and students.

Small Group Discussion

- ❖ Which action steps are the most feasible to implement in the next year?
- ❖ What support or resources would be needed?
- ❖ What barriers must be addressed?
- ❖ How can you contribute to this mission?

1.3 Strengthen partnerships focused on language education, intercultural competence and global learning among schools and community stakeholders from local to international levels.

Action Steps

1. Create partnerships among organizations, non-profit groups and government agencies focused on global studies, language studies and intercultural competence (i.e. PACIE, AATs, PSMLA, ACTFL, NECTFL, etc.)
2. At the state level, collaborate to share existing successful language, intercultural and global studies program for all students & teachers.

Small Group Discussion

- ❖ Create partnerships among organizations, non-profit groups and government agencies focused on global studies, language studies and intercultural competence (i.e. PACIE, AATs, PSMLA, ACTFL, NECTFL, etc.)
- ❖ **What organizations do you recommend we contact? Jot them on a post-it.**
- ❖ At the state level, collaborate to share existing successful language, intercultural and global studies program for all students & teachers.
- ❖ **What successful language, intercultural or global studies programs can you share with others in the state? Jot them on a post-it.**

Implementing the Roadmap

Be the Star!

**Guiding students on the path
toward proficiency.**



**Introducing our
Keynote speaker,
Dr. Gilbert!**



REGISTER NOW!

PSMLA Annual Conference

Bethlehem, PA

October 15-17, 2025



Next Steps

- Finalizing the PA Language Roadmap- Oct.15, 2025 at Carbon Lehigh IU
 - **Finalize action steps**
 - **Discuss future plans**
 - Obtaining a World Language Advisor in PDE
 - Promoting PA and Global Seal of Biliteracy
 - College credit for intermediate-high or advanced language proficiency
 - Creating partnerships
 - Meeting with PA Secretary of Education

cherie@psmla.org

mike@psmla.org