

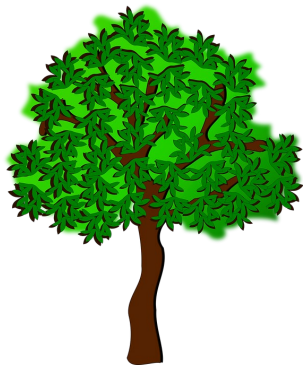
Dream House Design Challenge



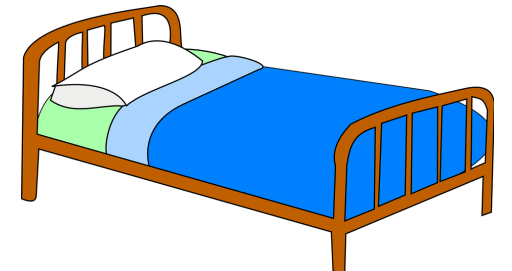
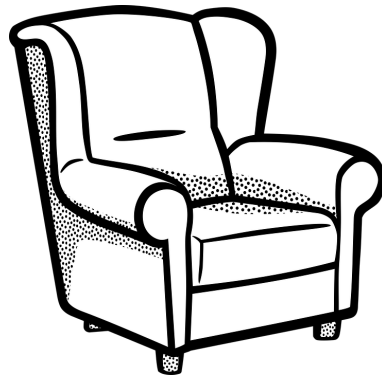
Image source: Western Pennsylvania Conservancy

Where will your dream vacation house be located?
Describe its location with as many details as possible.

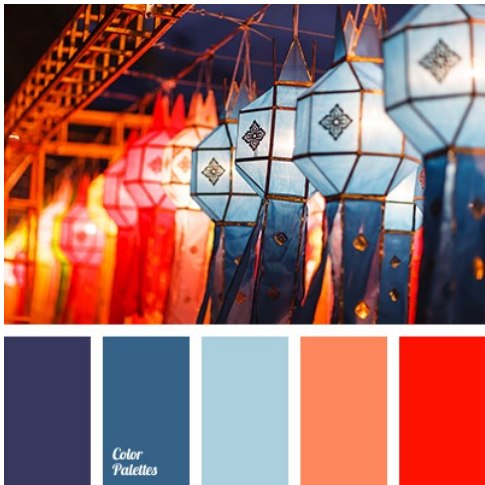
Why did you choose this location?



How many rooms will your dream vacation house need? What kinds of rooms? List all of the rooms that your vacation house will have.



What colors, textures, and patterns will you use in the design of your dream vacation house, and why?



Are there any special features that your dream vacation house will have?



Please take a moment to **sketch** your ideas for your Dream Vacation House.

Remember: A sketch is not a drawing. Sketches do not need to be perfect. As long as you can understand what your sketch represents, then it's a successful sketch.



Draw Your Dream House

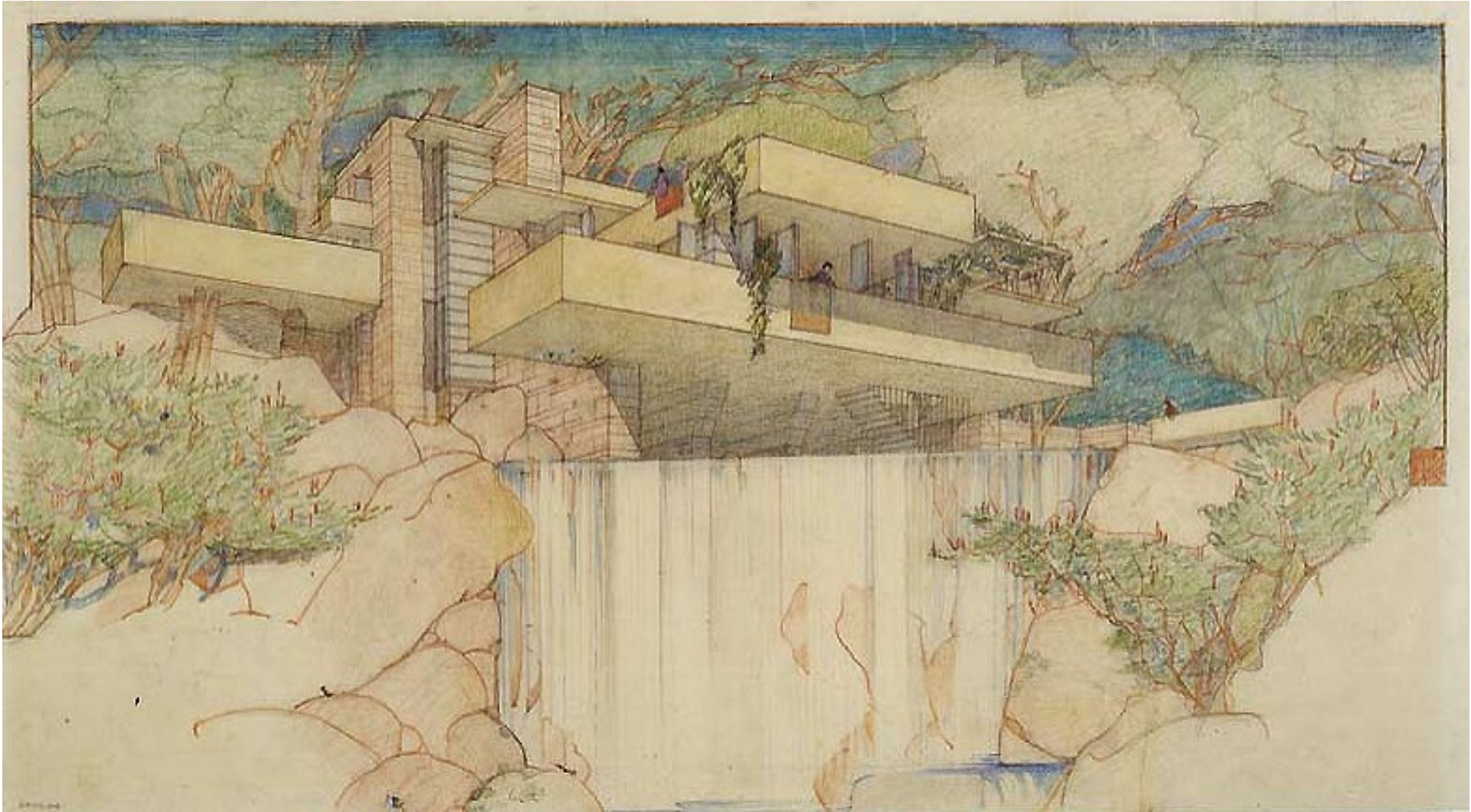


Image Source: Avery Library

Compare/Contrast

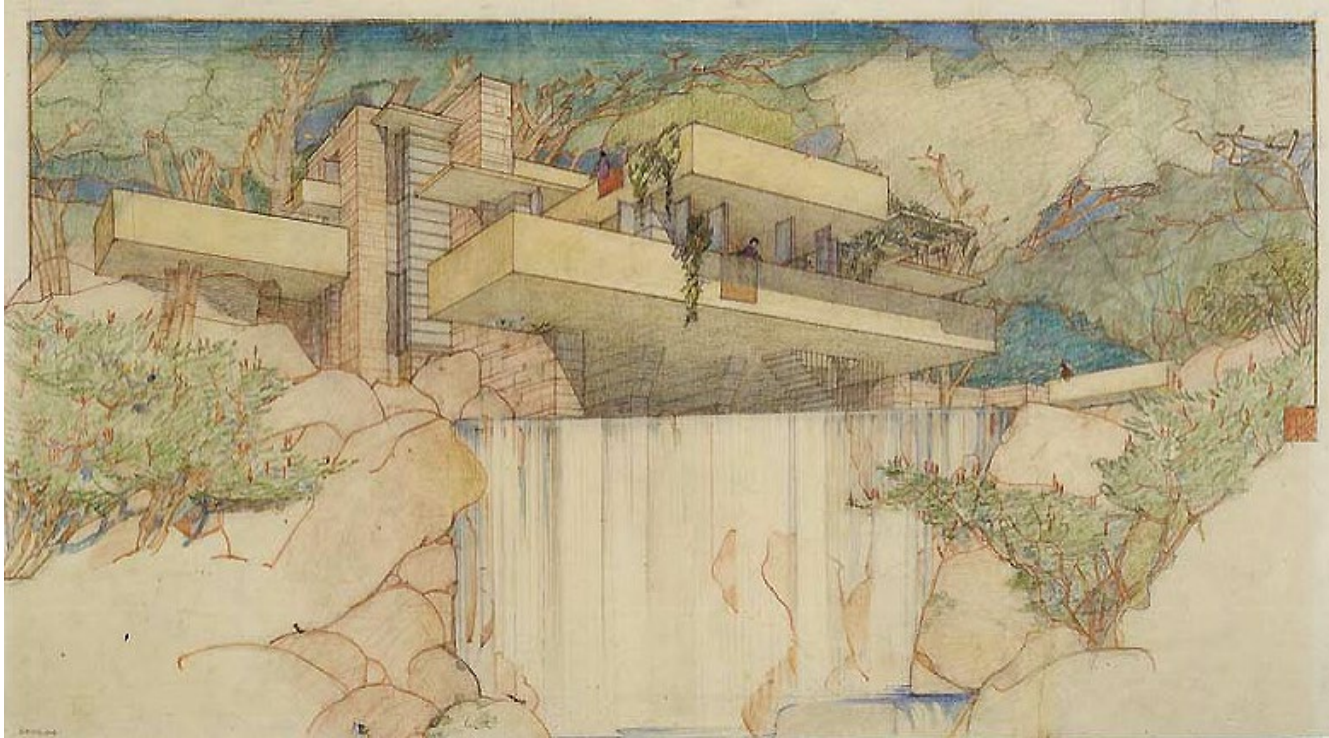


Image Source: Avery Library



Photo source: Andrew Pielage

Elevation

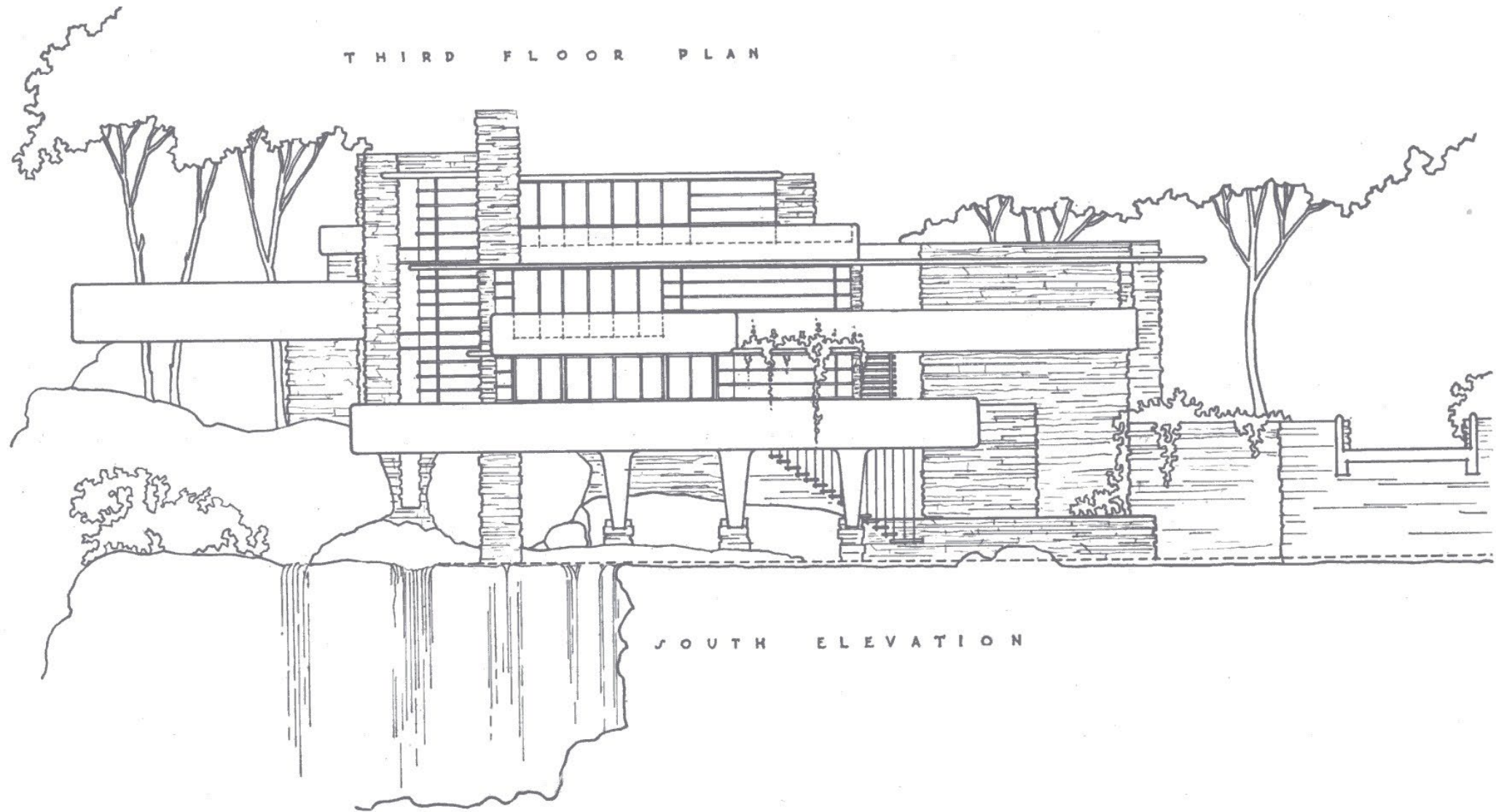
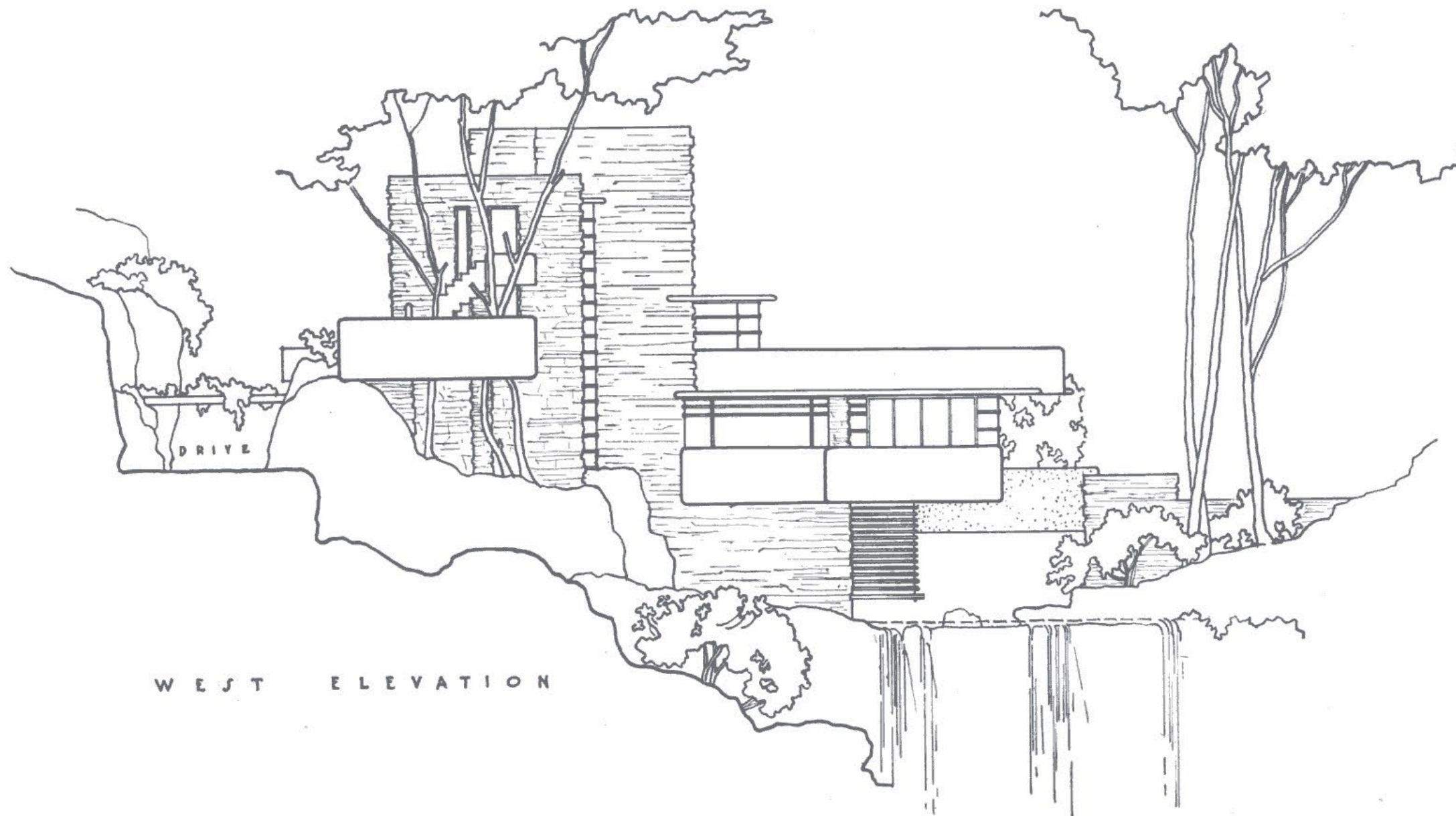


Image Source: Library of Congress

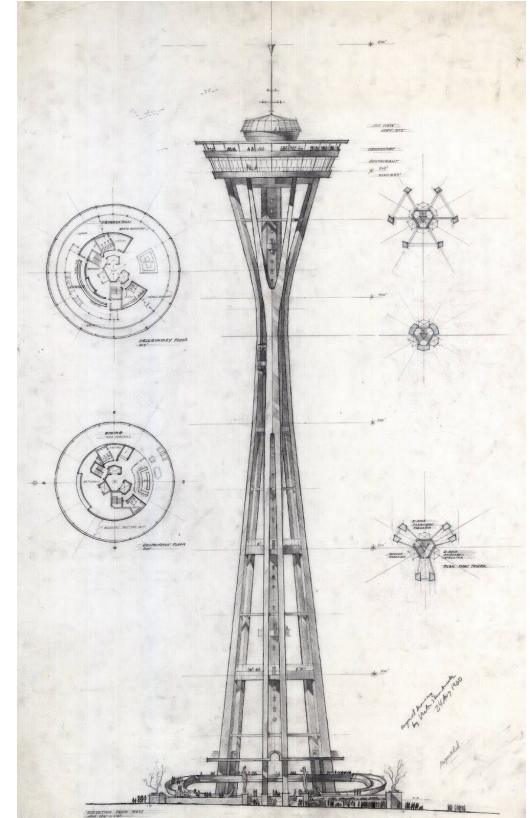


Scale

$\frac{1}{4}$ inch = 1 foot



This architectural drawing depicts the front elevation of the National Library of Medicine building. The structure is a grand, symmetrical classical building. It features a prominent central portico with a triangular pediment supported by a row of columns. Above this portico is a long, horizontal balustrade with decorative urns. The main facade is composed of a series of tall, narrow windows, many of which are flanked by columns. The building is set on a raised platform with a series of steps leading to the entrance. The drawing is a detailed line rendering, showing architectural details like moldings, cornices, and the texture of the stone or masonry. The overall style is neoclassical, reflecting the building's construction in the early 20th century.



Floor Plan

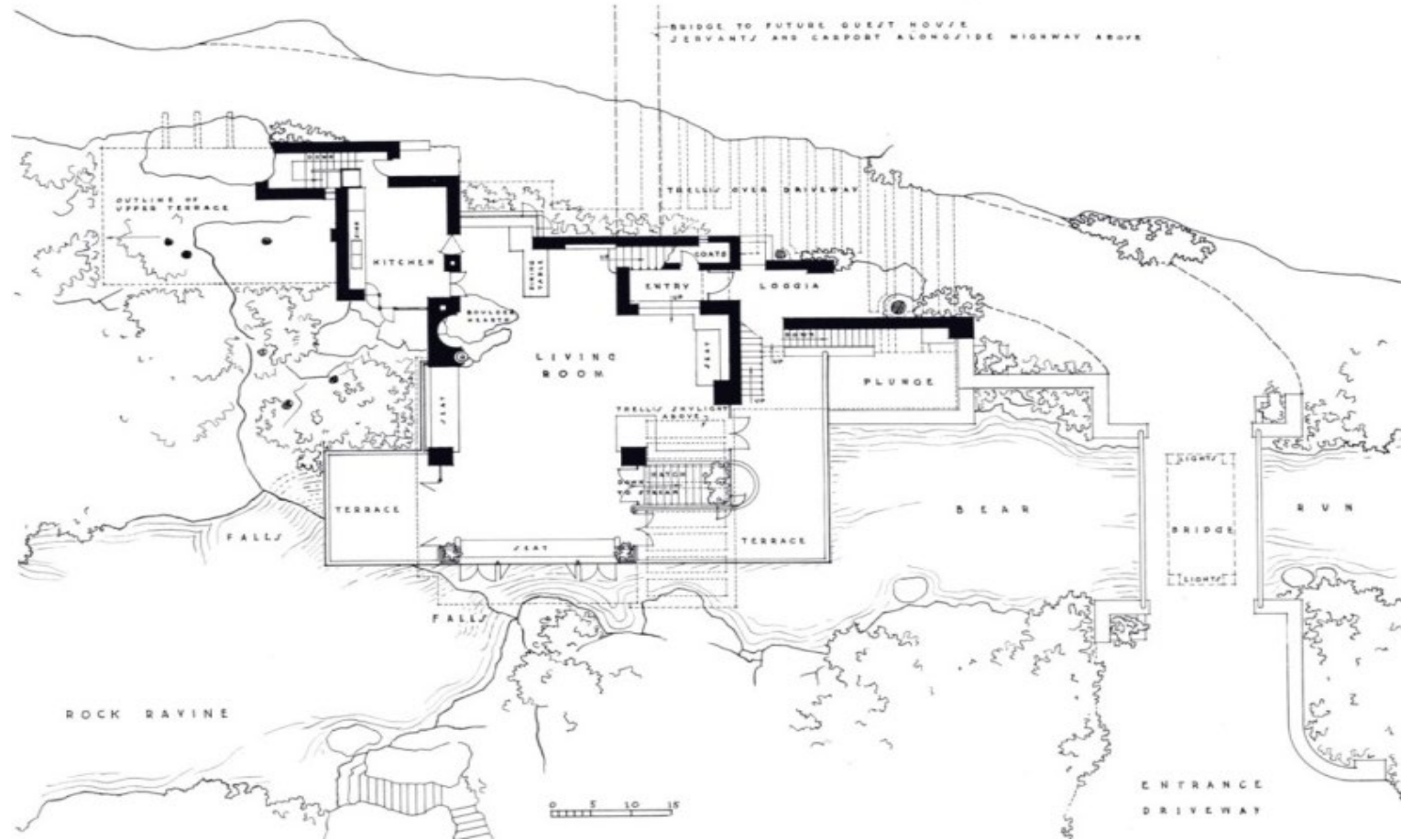


Image Source: Avery Library

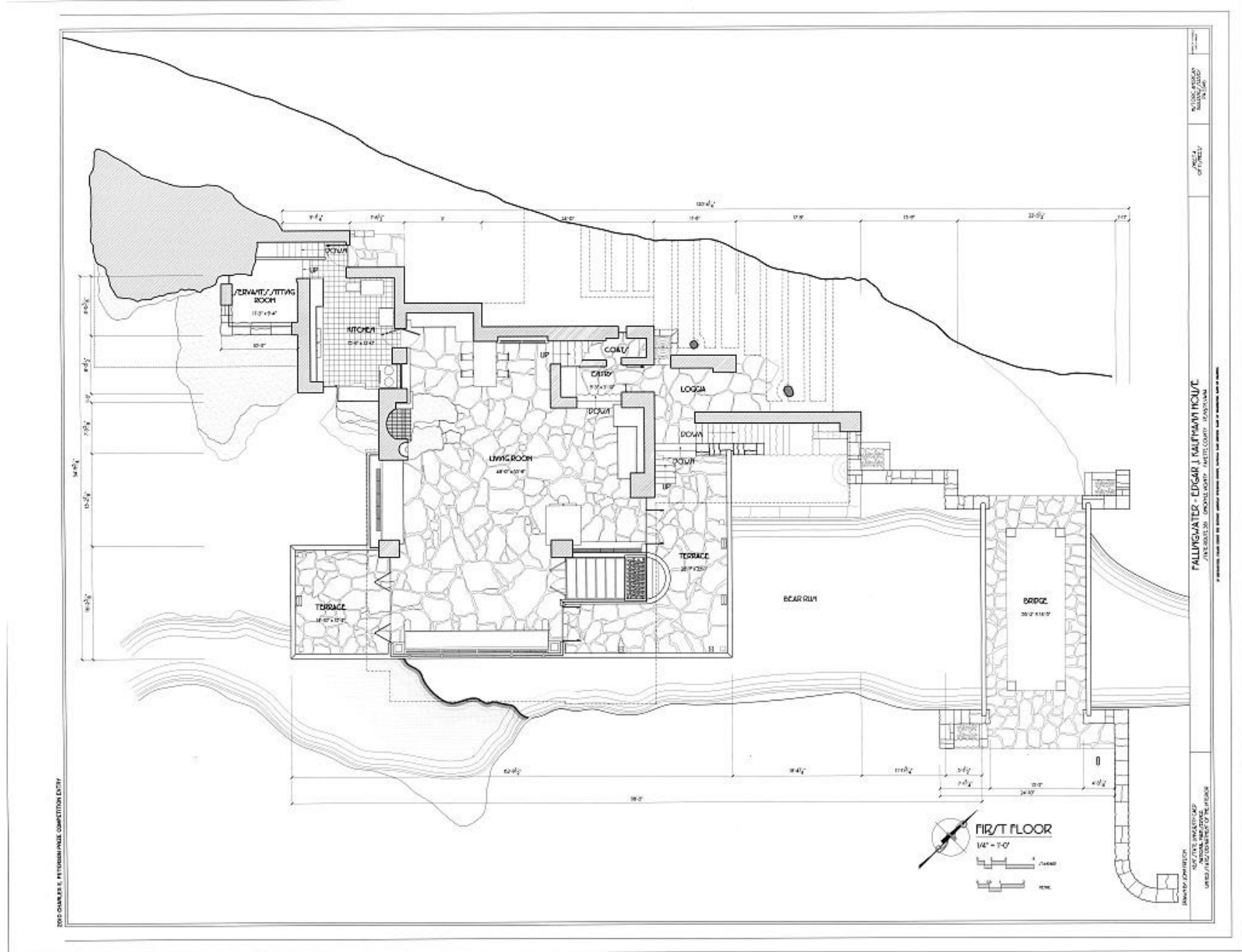
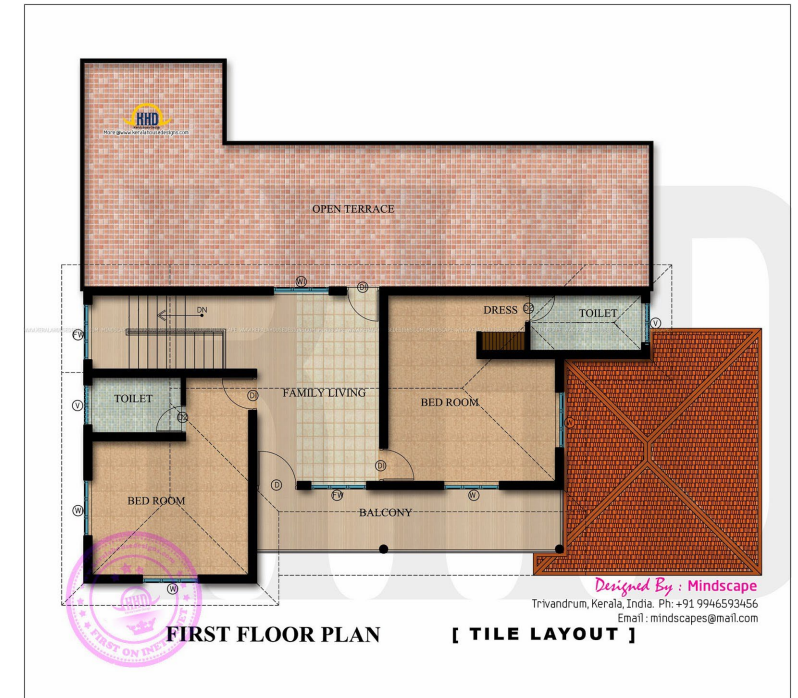
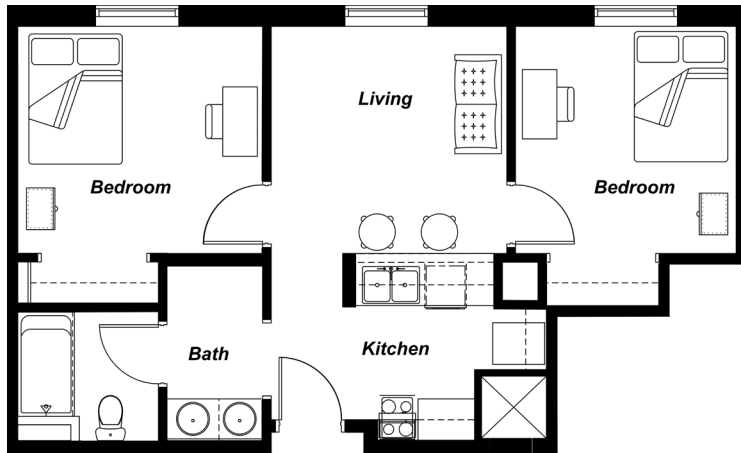


Image Source: Library of Congress

Draw a Floor Plan!



Section

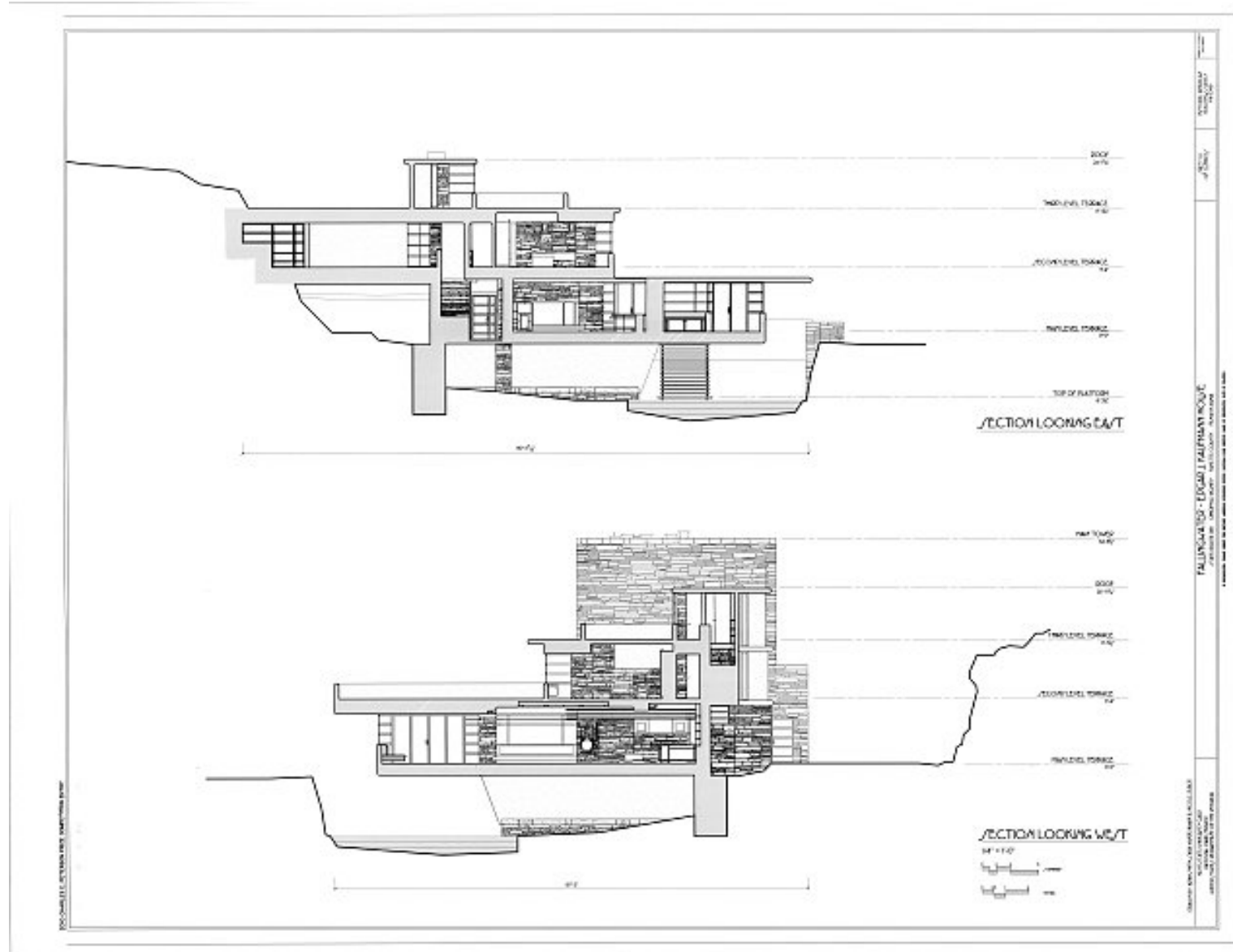


Image Source: Library of Congress

Draw a Section!

